

SOLID MODERN

Featuring works by Simon Gaiger and Genevieve Claisse
14 October - 11 November 2017

In curating **SOLID MODERN** we have chosen artists whose cardinal form stems from the Modern movements of Cubism, Di Stijl and Surrealism. Simon Gaiger from Wales and Parisian Genevieve Claisse have suitably different takes on abstraction.

SIMON GAIGER

Morpheus is the god of dreams. Biomorphic abstraction is rooted in Surrealism. The organic shapes made by sculptor Simon Gaiger echo the natural forms found in our essential nature; our anima. Surrealist art which is aesthetically close to Gaiger's, can be seen in the works of Joan Miro, Yves Tanguy, and Alexander Calder - and closer to home, in the somatic Welsh landscape painting of Graham Sutherland.

In 1937, Henry Moore wrote: "there are universal natural shapes to which everybody is subconsciously conditioned and to which they can respond if their conscious control does not shut them off".

Simon Gaiger's sculptures are small-scale. The forms are ratty - they don't hide the labouring hand. His muse is grounded in the battered anatomy of industrial Britain - hinged iron gates, old railway lines, canal locks and Victorian harbours. The beat of the hammer, the forge, the muscle, it's all so visceral - until - painted. Zippy colours blanket the sculptures. Colour transforms by defining and illuminating. It also serves to disguise their history - to set them free.

Gaiger charms us with his playful sensuality. Tangerine lips peek from coital loops of turmeric yellow. A hot orange goddess struts on three legs - presiding over birth, growth and death. A boat with a hole, exposes a surreal tale. These modern primitives are not empty vessels; they hold the pith of man's affect on the land we live on. The metamorphosis is incomplete.

GENEVIEVE CLAISSE

Pure Abstraction, as seen here in the prints of Genevieve Claisse, is the use of solid colour without tone, shape meeting shape, never overlapping. Orbs cusp angles to create the clean-cut designs which instantly rouse the senses, causing a dopamine high - pure joy. The early abstracts of the late John Hoyland stir the chakras in a similar way.

Genevieve Claisse, now eighty two, continues to make life-lifting works. Like her forbear Matisse, she is a doyen of colour and shape. Claisse learnt the concepts of formal purity from her uncle, the abstract painter Auguste Herbin: the permutations of the circle and triangle are Genevieve's abiding passion.

To put her in context, Claisse, in '50's Paris, was honing a visual language similar to the St Ives artists Ben Nicholson and Barbara Hepworth. Bridget Riley's optical abstractions are resemblant.

Critique **Vera Marr**





Simon Gaiger

Simon Gaiger's art can be seen at Knight Webb Gallery in London and here at Circle Contemporary. Simon is one of our core artists and a member of the Royal British Society of Sculptors. His work is in private collections worldwide.

Apart from his sculpture, Simon Gaiger collaborates with cutting edge architects and individual clients to create off-beat pieces of furniture. Recent projects have included pieces for a Kuwati beach house, the Neo Bankside building in London and a project with Kuchel Architects in Switzerland.



Simon Gaiger
Signal
Welded, painted steel
86 (h) x 32 (w) x 26 (d) cm



Simon Gaiger

Gyre

Welded, painted steel

72 (h) x 75 - 86 (l) x 25 - 65 (d) cm



Simon Gaiger
Undertow
Welded, painted steel
65 (l) x 30 (w) x 52 (h) cm



Simon Gaiger
Drift Seed
Welded, painted steel
49 (l) x 31 (h) x 15 (d) cm



Simon Gaiger
Floodgate
Welded, painted steel
49 (l) x 31 (h) x 15 (d) cm



Simon Gaiger
Wild Goose
Cedar and steel
190 (l) x 75 (h) x 59 (w) cm



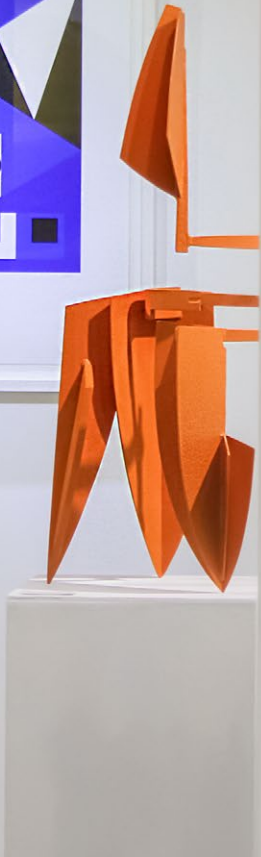
Simon Gaiger
Scorched Ash Low Table
Ash, steel and cedar
127 (l) x 38 (h) x 118 (d) cm



Genevieve Claisse

French artist Genevieve Claisse, is the leading female abstract painter of her generation and one of the most important voices in contemporary art today.

Claisse has exhibited internationally with her most recent retrospective at the Musée Matisse-Herbin, in 2015. Her work can be found in public collections around the world including the Guggenheim Museum, New York.





Genevieve Claisse

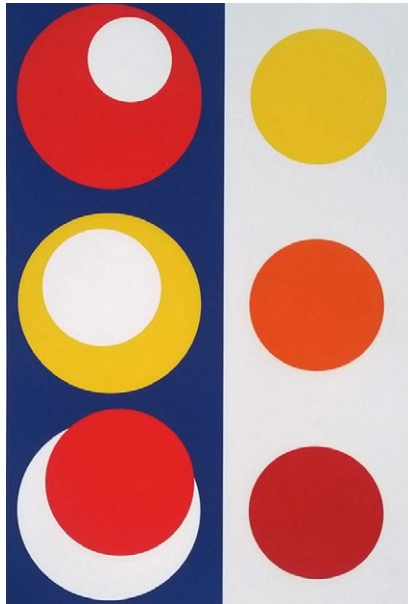
Contralto

Giclee on hand made cotton paper

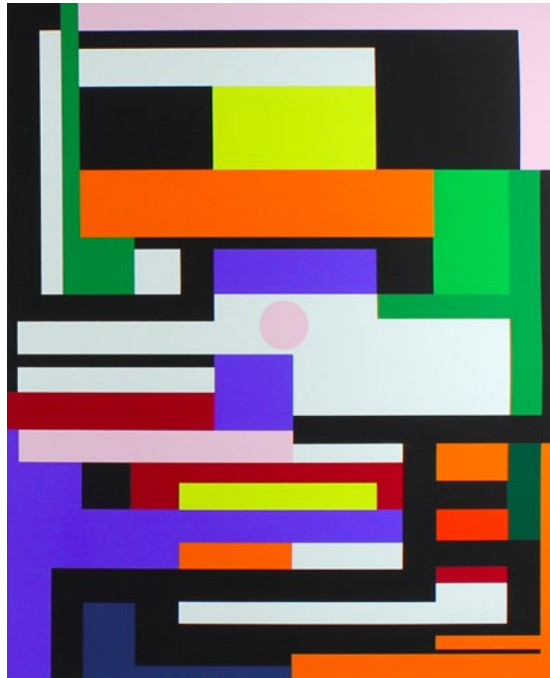
Signed and numbered by artist

Print edition 10/30

31.0 x 23.8 in



Genevieve Claisse
Composition Cinetique 15
Giclee on hand made cotton paper
Signed and numbered by artist
Print edition 11/30
23.6 x 23.8 in



Genevieve Claisse

Slalom 2

Giclee on hand made cotton paper

Signed and numbered by artist

Print edition 25/30

29.4 x 23.8 in



Genevieve Claisse

Quark Bleu

Giclee on hand made cotton paper

Signed and numbered by artist

Print edition /30

23.6 x 23.8 in



Genevieve Claisse

Composition Cinetique 10

Giclee on hand made cotton paper

Signed and numbered by artist

Print edition /30

23.6 x 23.8 in

CIRCLE contemporary

Circle is a Fine Art Gallery located in North Cornwall.

We show a selection of abstract and figurative artists whose primary inspiration is the natural landscape. Circle also represents European artists and exhibits some of the finest craftwork being made today.

Gallerists John O'Carroll and Lucy Thorman run the gallery with a professional but relaxed vibe, in keeping with west coast gallery convention. John O'Carroll is also a visual artist with an onsite studio.

The gallery is a cool and minimal space which is continually evolving. We collect emerging and well known artists, alternating group and solo exhibitions, focusing on fresh and innovative art.

lucy@circlecontemporary.co.uk

01208 813 220

Hawksfield, Atlantic Highway, A39, Wadebridge, Cornwall PL27 7LR

Monday – Saturday, 10am – 4pm

www.circlecontemporary.co.uk