

MIND THE GAP

New works by Elin Hughes & Spencer Shakespeare

Both these artists have presented new works which remind us that the illusion of lightness in painting or patterning is achieved by careful consideration of negative space.

Spencer Shakespeare is evangelical in his approach to painting and in his own life. He seeks the light and his latest paintings have an airiness - his marks stand alone, without the need to draw and colour every inch of space. Shakespeare has forsaken the decorative appropriation of modernism, except for Picasso, who touches his right shoulder.

Elin is a Spring goddess, making vases, breaking vases and reconstructing vessels with such jauntiness and fluency of historical referencing they make the heart sing. Her new pots pay homage to the cobalt blue and iron red foliage and flowers motifs on Victorian Gaudy Welsh pottery, English and continental Imari ware. Elin has sourced designs but her flowers are hand drawn; revived and relaxed they have broken free from 18c pattern books. Feminine whimsy is personified in a teapot like vessel with a spout, handle and complementary nipple - wide-bosomed Gaia.



Elin Hughes
GOWER JUG (TEBOT Y GWYR), 2021
Earthenware clay with majolica glaze and decals
29.5 x 29 x 18 cm
£420



Elin Hughes
DENBIGH JUG (JWG DINBYCHI), 2021
Earthenware clay with majolica glaze and decals
47 x 21.5 x 15.5 cm
£520



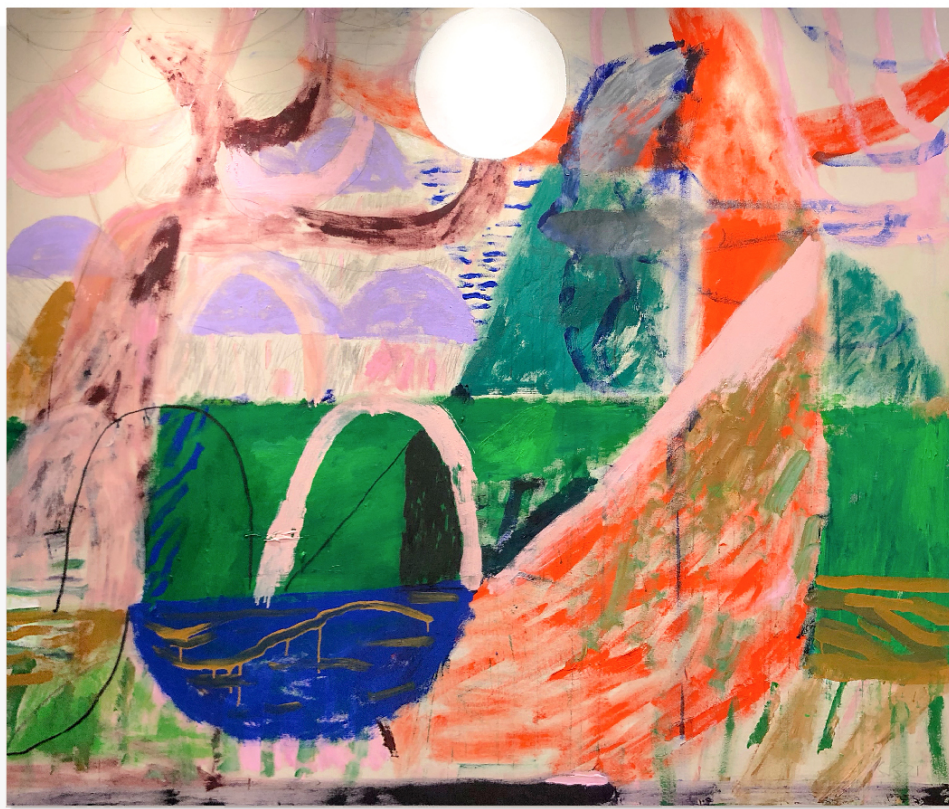
Elin Hughes
ABERA ERON EWER (STÉN ABERAERON), 2021
Earthenware clay with majolica glaze and decals
32 x 35 x 20 cm
£480



Elin Hughes
SUNFLOWER BOTTLE (BOTEL BLODYN YR HAUL), 2021
Earthenware clay with majolica glaze and decals
45 x 15.5 x 15 cm
£480



Elin Hughes
USK JUG (JWG BRYNBUGA), 2021
Earthenware clay with majolica glaze and decals
18 x 20 x 12.5 cm
£280



Spencer Shakespeare
Little River, Big Sea Bird of Prey Through Trees, 2021
 Oil, acrylic, oil stick on raw canvas
 170 x 200 cm
 £5495



Spencer Shakespeare
YOU & ME, 2021
 Oil, acrylic, oil stick on raw canvas
 71 x 61 cm
 £1100



Spencer Shakespeare
RUNNING WITH THE HARE, 2021
 Oil, acrylic, oil stick on raw canvas
 61 x 71 cm
 £1100



Spencer Shakespeare
GEMINI LOVERS, 2018
 Oil, acrylic, oil stick on raw canvas
 107 x 97 cm
 £2200



www.circlecontemporary.co.uk/mind-the-gap
lucy@circlecontemporary.co.uk
[@circlecontemporarygallery](https://www.instagram.com/circlecontemporarygallery)